

Roadmap to 2027 Certification

Easy Steps to Completing the HealthSpringSM Medicare Advantage and Prescription Drug Plan Certification

Your road to HealthSpring certification in 2027 just got even easier!

We've reduced our courses by 50%!

Your Easy Path to 2027 Certification

Not registered for HealthSpring for Brokers?

Follow the Appendix [instructions](#). Once registered, proceed to **Step 1**.

1

Access Producers' University through [HealthSpring for Brokers](#) and click My Learning.

*Recommended browsers are **Chrome** and **Edge**.*

If your email changed since you initially registered for **HealthSpring for Brokers**, or you are unable to log in, contact ARC at **866-442-7516** or ARCMAPD@healthspring.com.

2

Complete all the required training on your learning track or take advantage of our **test-out** option!

3

Score at least **85%** to pass the exam.

You have **3 total attempts** — but **failing the test-out** exam leaves you with only **2 remaining**.

4

Complete your **Medicare Basics Certification** using one of these **3 options**:

AHIP – Complete directly on your training track for a discounted rate of **\$125.***

Pinpoint – Complete directly on your training track for a discounted rate of **\$99.95.****

NABIP – Upload a certificate.

**If already completed, you can transmit your AHIP results via the AHIP [portal](#).*

***Not all carriers accept Pinpoint.*

5

Check **My Transcript** to confirm all required trainings are **100% complete**.

Certification — Making It Even Easier for You

- Complete only 2 HealthSpring Courses (**Products Overview** and the **Attestations Course**)
- Complete AHIP, Pinpoint or NABIP
- No separate PDP certification for agents who hold licenses in our MAPD states — The MAPD Products and Benefits Overview qualifies you to sell our Standalone PDP plans
- Agents who only hold licenses in states where HealthSpring does not have an MAPD product will be assigned the standalone PDP course on the PDP-Only track
- Take advantage of the **\$50 AHIP upfront discount** — launch AHIP from Producers' University or use our [AHIP link](#) to transmit your completion to HealthSpring

Reminder: All agencies must have an active writing principal who completes all certification requirements

Test-Out Track

The test-out option is **separate** from your training track. To take advantage of the option:

- Launch the test-out track
- Download course content (*required*)
- Complete test-out exam
- If you successfully complete the exam, launch **2027 Attestations**
- Complete AHIP, NABIP*, or Pinpoint Medicare Certification

*NABIP is only available as a manual certificate upload.

The screenshot displays the 'Test-Out Track' interface. At the top, it says 'TEST-OUT TRACK' and provides instructions: 'You have 1 attempt to test-out of any of the courses below. You must achieve at least an 85% score on the test. If you do not pass, you will need to go back to your regular track and complete both the course and the exam.' A red note states: 'NOTE: The Attestations Course does not include a test-out option and it must be completed in addition to your other required courses in order to meet certification requirements and be ready to sell.' Below this, a modal window titled 'Test-Out Exam for Our Products and Benefits Overview' is open. The modal shows a progress bar at 0% and a 'Not Started' button. A red message says 'Please download and save the course materials to your device'. Under 'LEARNING ACTIVITIES:', there are two items: 'Our Products and Benefits Overview Required Course Materials Download' and 'Test-Out Exam for Our Products and Benefits Overview', both with checkboxes.

Training Tracks

In the standard training tracks, the certification module is separate from its exam. You must successfully complete the course before taking the associated exam. The Attestations course does not include an exam. Note that if you successfully test out, it will automatically be marked complete in your learning track.

External Field and Telesales Learning Track

External Field

UPDATE: Please use either Edge or Chrome as your browser to complete this.

0%

In progress	Not Started	Not Started	Not Started
2027 Attestations	Our Products and Benefits Overview	Medicare Certification	Certification Evaluation

0 Min
1 Module

0 Min
1 Module

0 Min
1 Module

0 Min
2 Modules

0 Min
1 Module

Our Products and Benefits Overview

Not Started

Self-paced course

Confidential, unpublished property of Cigna Healthcare. For sales rep and broker use only. Do not duplicate or distribute. Use and distribution limited solely to authorized personnel. Copyright © 2026 Cigna Healthcare.

0 Min
2 Modules

LEARNING ACTIVITIES:

- Our Products and Benefits Overview
- Our Products and Benefits Overview Exam

You are **NOT** considered **ready to sell** until you have completed all Certification courses including the **2027 Attestations**.

*PDP-Only Track (Agents Only Licensed In HealthSpring Non-MAPD States)

PDP-Only Markets

UPDATE: Please use either Edge or Chrome as your browser to complete this.

0% 4 Courses 0 Min.

Not Started 2027 Attestations 0 Min 1 Module	Not Started Our Prescription Drug Plan (PDP) 0 Min 2 Modules	Not Started Medicare Certification 0 Min 3 Modules	Not Started Certification Evaluation 0 Min 1 Module
--	--	--	---

Test-Out Track for PDP-Only

Test-Out PDP Track

TEST-OUT TRACK
You have 1 attempt to test-out of the course below. You must achieve at least an 85% score on the test. If you do not pass, you will need to go back to your regular track and complete both the course and the exam.

NOTE: The Attestations Course does not include a test-out option and it must be completed in addition to your other required course in order to meet certification requirements and be ready to sell.

UPDATE: Please use either Edge or Chrome as your browser to complete this.

0% 3 Courses 0 Min.

Not Started 2027 Attestations 0 Min 1 Module	Not Started Test-Out Exam for Our Prescription Drug Plan (PDP) 0 Min 2 Modules	Not Started Certification Evaluation 0 Min 1 Module
--	--	---

*Only agents who are licensed in a state where HealthSpring does not have a 2027 Medicare Advantage plan will be assigned this track. You may choose the test-out option by launching the Test-Out Track for PDP-Only.

You are **NOT** considered **ready to sell** until you have completed all Certification courses including the **2027 Attestations**.

Important Information

You may log on to Producers' University to launch your AHIP certification.

- If you have already completed AHIP, simply visit this [link](#) and log on to the AHIP site to transmit your completions to HealthSpring (no need to manually upload a certificate)
- You can also launch the Pinpoint certification directly from your assigned learning track
- If your track already shows completion for AHIP/Pinpoint/NABIP, you will not be able to upload a certificate manually
- Agents taking NABIP will need to manually upload their certificates to Producers' University
- Please note that your course completion will only show "In Progress" until you have completed and passed the associated exam

Important Note:

If you started 2026 certification and did not successfully complete all requirements including uploading your AHIP certificate prior to our system updates on June 22, the good news is that 2027 certification also certifies you for the remainder of 2026. You are however required to review the summary of benefits of the 2026 plans you will be offering.

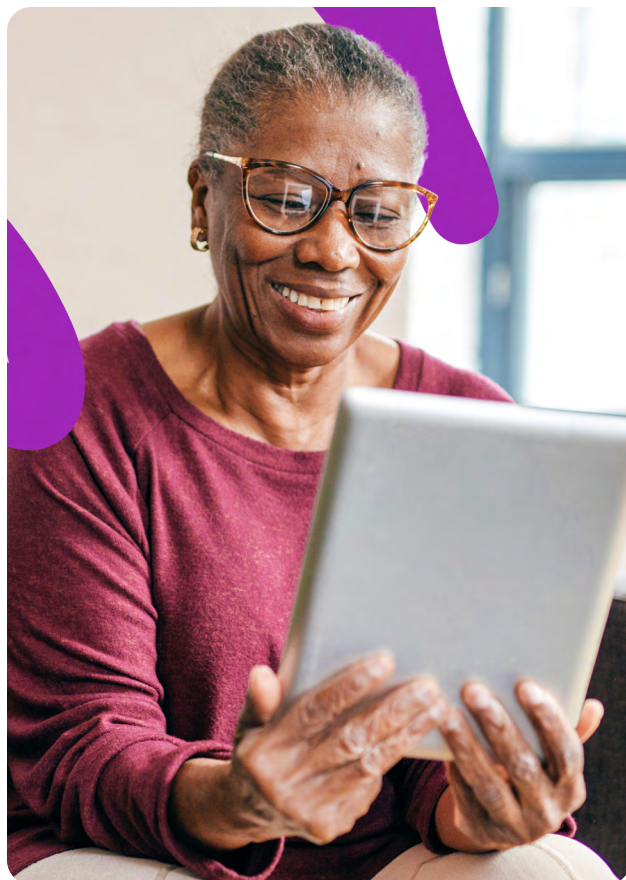
Questions? Contact the **Agent Resource Center (ARC)** at **866-442-7516** or at ARCMAPD@healthspring.com for all certification related support.

Appendix

To Register for **HealthSpring for Brokers**:

- Visit [HealthSpring for Brokers](#)
- Click “**Login**”
- Select “**Don’t have an account? Sign Up**” at the bottom of the page
- Complete the information fields

Note: Select “**Agent**” from the ‘Your Relationship to HealthSpring’ dropdown question



If you encounter issues registering for **HealthSpring for Brokers**, contact the **Agent Resource Center (ARC)** at **866-442-7516** or at ARCMAPD@healthspring.com.